

# ttl2usb.com

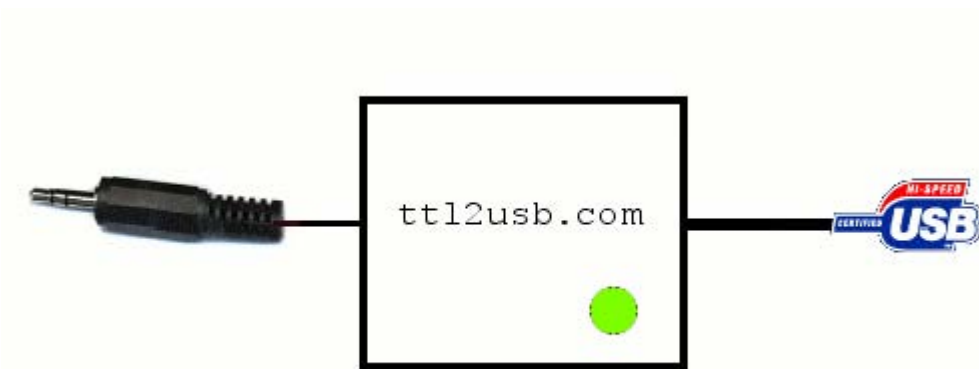
seattle, wa, usa

Thank you for your order we appreciate your business! You have just purchased the latest in amateur radio interface cable technology. Your new ttl2usb.com interface cable is easy to use and compatible with your modern computers. You will be up and running with your programming software in no time!

73,  
ttl2usb.com staff

## Quick Start Guide

Your ttl2usb.com order was shipped with three basic items: 1 - TTL to USB circuit box (CT-2), 2 - A to mini-B 4 pin USB cable, and 3 - programming cable(s). The programming cables all have a 3.5mm stereo plug on one end and the following options on the other end: 2.5mm male stereo, 3.5mm 4 conductor male audio, 6 pin mini din, 8 pin mini din, RJ11.



## Step 1 - Installing USB device

Download the USB drivers from the ttl2usb.com website. There is a link to the drivers from the main page or you can use point your web browser to:

<http://ttl2usb.com/installation/ttl2usb.zip>

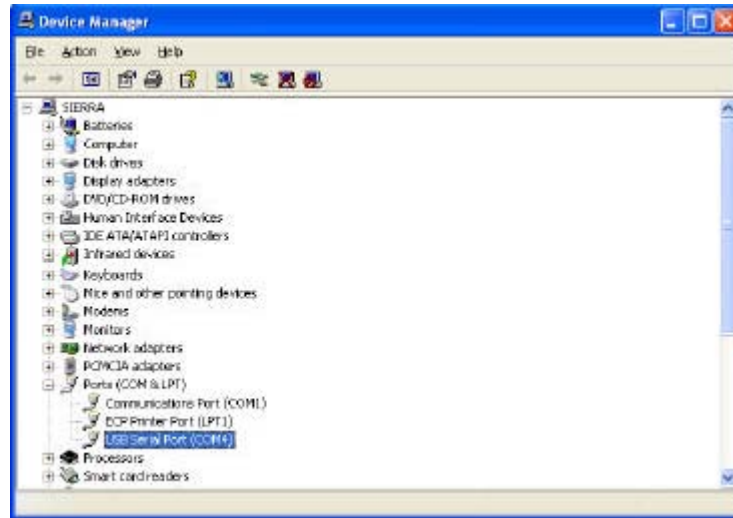
Extract the zipped driver file to a temporary location.

Plug the mini-B connector of the USB cable into the ttl2usb.com CT-2 converter box and plug the USB A connector into the USB port on your computer. Be sure that the cable is fully seated into both the CT-2 and your computer. Windows XP may automatically recognize the device as a serial port, if not it will ask you for a driver. Follow the directions Windows provides for finding the driver. When it asks you where to look for the driver, select the temporary folder where the drivers were extracted.

© 2005-2008 ttl2usb.com  
visit us at <http://ttl2usb.com>  
email us at [ttl2usb@gmail.com](mailto:ttl2usb@gmail.com)

Windows will load the appropriate driver and you will be able to use the device immediately.

The ttl2usb.com cable automatically selects a COM port, to find out what port the device is using load the Window's device manager and look under "Ports (COM and LPT)" as illustrated below.



## Step 2 - Connecting to Yaesu Radio

The next step is to connect the programming cable to the ttl2usb.com CT-2 adapter. Plug the 3.5mm stereo cable (this should be obvious with all cables except for the CT-29B, 3.5mm 4 conductor cable since they are both 3.5mm. Choose the cable with the least number of stripes on the plug) into the CT-2 adapter. Plug the other end of the cable into the device you would like to program.

Note: The CT-29A cable was designed for the 2.5mm female socket of the Yaesu CT-91 cable. ttl2usb.com recommends that you use the Yaesu CT-91 cable to eliminate any potential interface cable problems. The CT-29B will plug directly into most radios with the exception of the VX-7R. The CT-29C 6 pin mini din is designed for the FT-8X00 series radios.

## Step 3 - Using Commander Software

The final step is to load Jim Mitchell's VX Commander Software (available at our website or at <http://www.kc8unj.com/>) and start programming your radio. After loading the VX Commander programming software, the first step is to set your COM port (Select "Ports" under the "Settings" menu) to the same port the ttl2usb.com device shows in the device manager.

After that you are all set to begin programming your radio!